

Hoval EnerVal (100-2000)

Buffer storage tank
EnerVal (100-2000)



Table of contents

■ Description	5
■ Part numbers	6
■ Technical data	8
■ Dimensions	9

**Buffer storage tank
EnerVal (100-300)**

- Steel buffer storage tank for the hydraulic integration of energy generators
- Thermal insulation made of polyurethane hard foam, foamed on the storage
- Removable foil jacket in red
- (100): 2 connection sleeves Rp 1 ½", 2 connection nozzles R 1"
- (200): 5 connection sleeves Rp 1 ½"
- (300): 8 connection sleeves Rp 1 ½"
- 1 sleeve Rp ½" with thermometer and immersion sleeve mounted
- (200,300): 2 sensor channels

Delivery

- Buffer storage tank with foil jacket completely installed and packed



**Buffer storage tank
EnerVal (500)**

- Steel buffer storage tank for the hydraulic integration of energy generators
- Thermal insulation made of polyurethane hard foam, foamed on the calorifier
- Removable foil jacket in red
- 8 connection sleeves Rp 1 ½"
- 1 sleeve Rp 1 ½" for screw-in electrical heating inset
- 1 sleeve Rp ½" with thermometer and immersion sleeve mounted
- 2 sensor channels

Delivery

- Buffer storage tank with foil jacket completely installed and packed

Range EnerVal type		Content l	Operating pressure bar
(100)	A →	117	3
(200)	B →	222	3
(300)	B →	283	3
(500)	B →	473	3
(800)		785	3
(1000)		918	3
(1500)		1425	3
(2000)		2019	3

A* → F

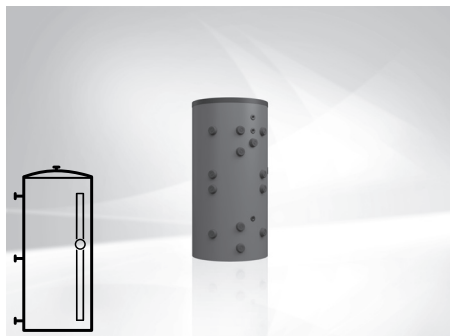
**Buffer storage tank
EnerVal (800-2000)**

- Steel buffer storage tank for the hydraulic integration of energy generators
- Thermal insulation made of polyester fleece with foil jacket, colour red (removable)
- 10 connection sleeves G 2" (IT)
- 2 sleeves G 1 ½" (IT) for screw-in electric heating element
- 3 sleeves G ½" (IT) for sensor/thermometer
- Terminal strips for contact sensors
- 1 sleeve G 1" (IT) for circulation lance only with EnerVal (800,1000)
- 1 sleeve G 1" (IT) for ventilation
- Perforated separating plate in the central area for separation of the temperature zones
- Flow diversions permanently installed
- 13 insulated cover caps made of EPP hard foam, 2-piece (can be broken out)

Delivery

- Buffer storage tank with thermal insulation completely installed and packed
- Insulated cover caps already installed (can be removed and broken out)

Buffer storage tank



EnerVal (100-2000)

Steel container raw on the inside,
EnerVal (100-500) completely installed,
EnerVal (800-2000) thermal insulation completely installed

EnerVal type	Content l
(100)	117
(200)	222
(300)	283
(500)	473
(800)	785
(1000)	918
(1500)	1425
(2000)	2019

Part No.

7016 826
7013 681
7015 975
7015 976
7019 129
7019 130
7019 131
7019 132

Energy efficiency class
see "Description"

Electric heating elements
see chapter "Electric heating elements"

Accessories



Protective tube immersion sleeve set 200 1/2", 4 x
For installation of maximum 4 sensors
Nickel-plated brass
Installation length = 187 mm
Outer Ø: 18 mm, inner Ø: 16 mm
including 3 segment springs 90°,
1 Omega clamping spring

6061 045



Protective tube immersion sleeve SB280 1/2"
Nickel-plated brass
Installation length = 280 mm
Outer Ø: 9 mm, inner Ø: 7 mm

2018 837



Thermometer kit
for EnerVal (800-6000)
Thermometer 0 ... 120 °C with
chromium plated edge and Hoval logo
Stem length: 80 mm, stem Ø: 9 (13) mm,
External Ø: 80 mm
incl. immersion sleeve 1/2" nickel-plated
brass, installation length: 200 mm,
external Ø: 16 mm, internal Ø: 15 mm
and clamping spring

6052 107



Inject lance
for EnerVal (200-500)
For horizontal installation in the
buffer storage tank.
For the decrease of the turbulence of
the attached water.
Screw-in depth: 450 mm
Connection: Rp 1 1/2"

6051 645

Services



Services and associated scope of services
see separate catalogue "Hoval Services"

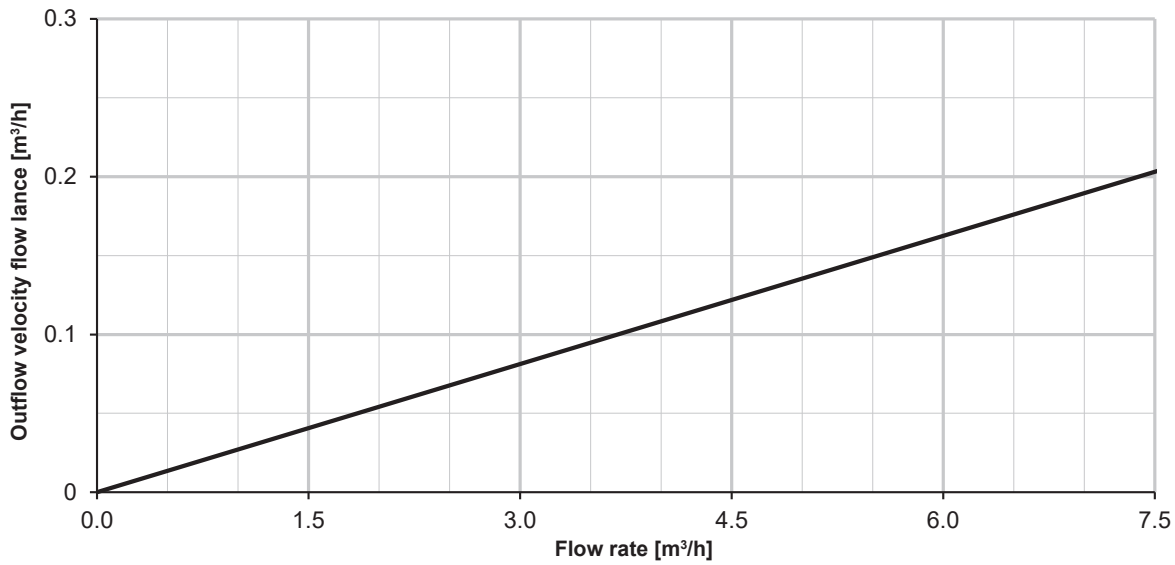
Commissioning by Hoval customer service is a prerequisite for warranty/guarantee activation.

Part No.

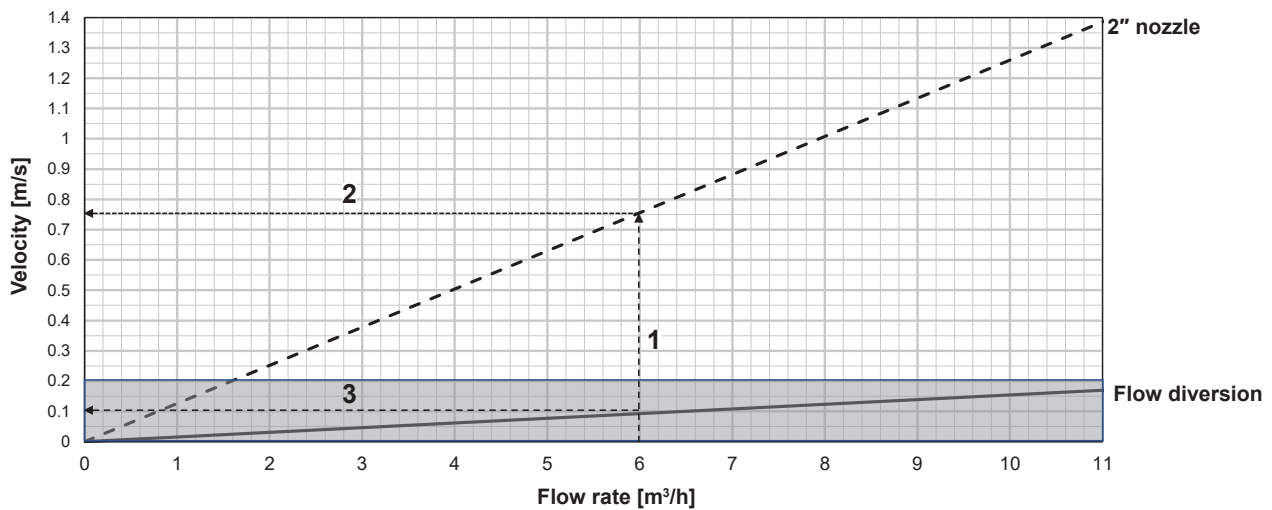
EnerVal (100-2000)

Type		(100)	(200)	(300)	(500)	(800)	(1000)	(1500)	(2000)
• Volume	litres	117	222	283	473	785	918	1425	2019
• Max. operating/test pressure	bar	3/4	3/4	3/4	3/4	3/4	3/4	3/4	3/4
• Min. operating temperature	°C	5	5	5	5	20	20	20	20
• Max. operating temperature	°C	95	95	95	95	95	95	95	95
• Thermal insulation PU rigid foam, foam-lined	mm	50	50	75	75	-	-	-	-
• Thermal insulation polyester fleece	mm	-	-	-	-	150	150	150	150
• Thermal insulation λ	W/mK	0.027	0.027	0.027	0.027	0.04	0.04	0.04	0.04
• Fire protection class		B2	B2	B2	B2	B2	B2	B2	B2
• Heat loss at 65 °C	W	35	53	51	72	119	130	153	185
• Transport weight	kg	41	59	79	111	150	160	265	385
• U value	W/m ² K	0.359	0.359	0.279	0.296	0.315	0.308	0.299	0.302
• Dimensions		see table of dimensions							

**Outflow velocity flow lance DN 40
EnerVal (200-500)**

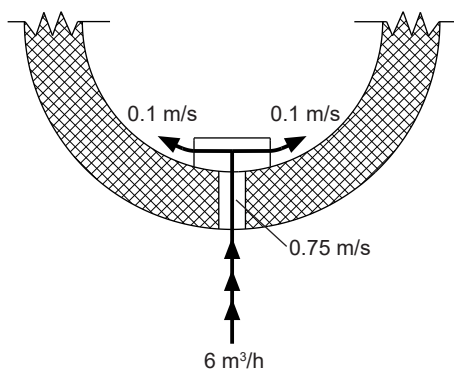


**Velocity in the connection nozzles and inflow velocity with flow deflection
EnerVal (800-2000)**



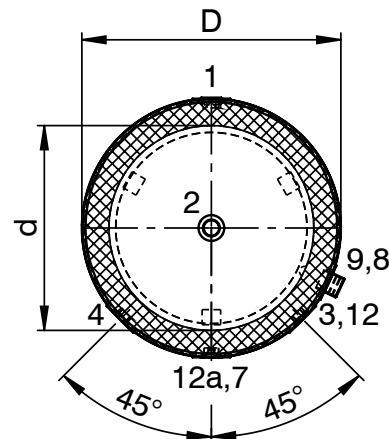
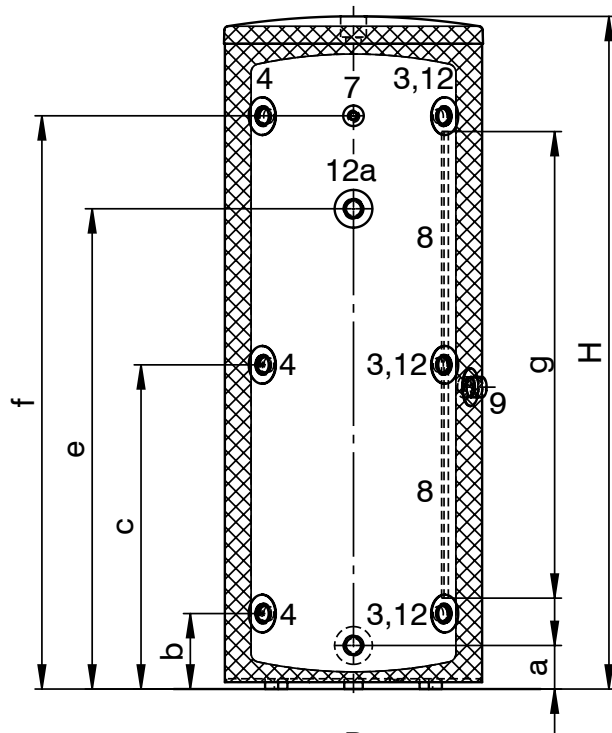
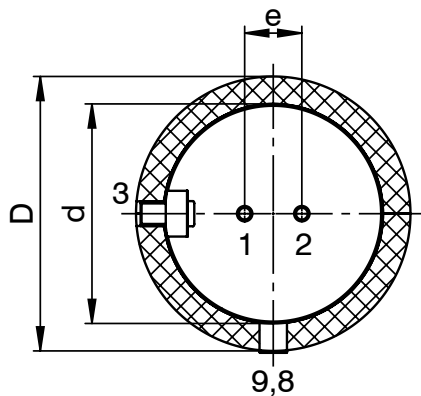
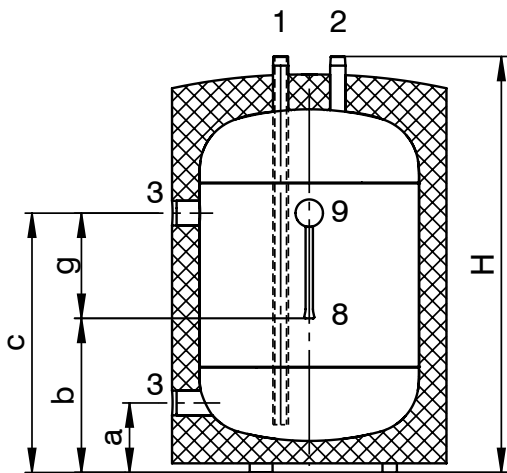
- 1 = flow rate
- 2 = velocity in the connection nozzles
- 3 = inflow velocity with flow deflection in the EnerVal

Example of inlet velocity distribution by flow diversions EnerVal (800-2000)



EnerVal (100)
(Dimensions in mm)

EnerVal (200-500)



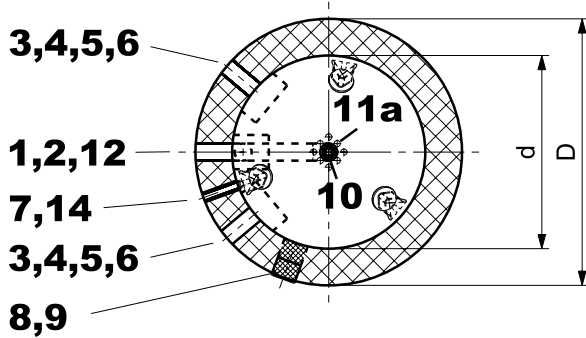
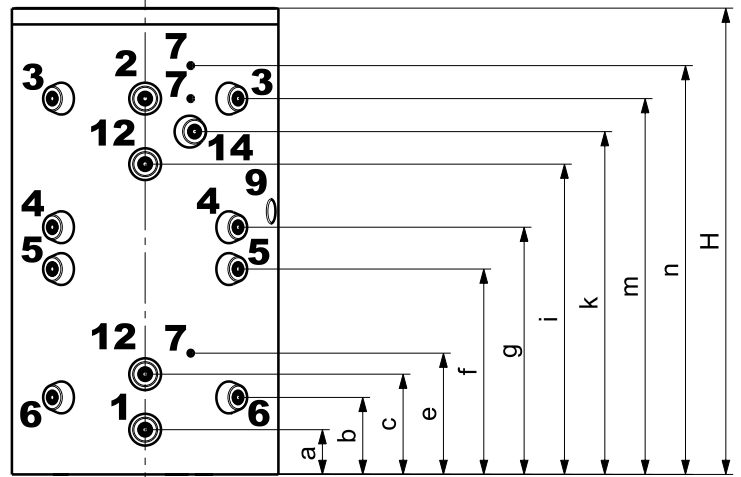
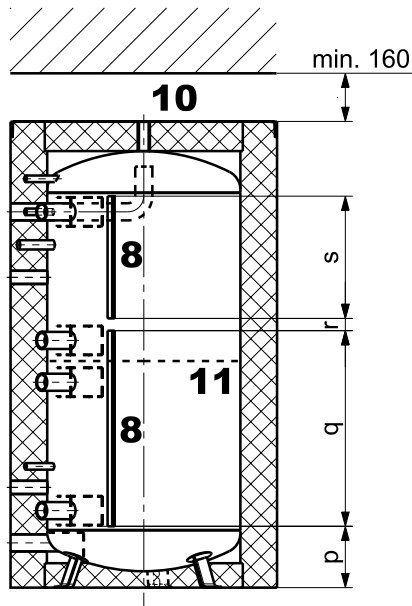
- | | |
|------------|----------------|
| Type (100) | Type (200-500) |
| R 1" (ET) | G 1½" (IT) |
| R 1" (ET) | G 1½" (IT) |
| G 1½" (IT) | G 1½" (IT) |
| | G 1½" (IT) |
| | G 1½" (IT) |

- 1 Heating connection return discharge
 - 2 Heating connection flow discharge
 - 3 Heat generator connection flow/return
 - 4 Heat generator connection flow/return 3 x, only with EnerVal (300,500)
 - 7 Sleeve with mounted immersion sleeve and thermometer
 - 8 Sensor channel inner Ø 11 mm
 - 9 Removable cap (60 mm) for positioning the sensor in the sensor channel
 - 12 Connection for screw-in electric heating element
(Positioning depends on the system, see hydraulic schematics of the heat generator)
 - 12a Additional connection for screw-in electric heating element, only for EnerVal (500)
- 1 + 2 For EnerVal (100), suitable for direct installation of an armature group LG/HA 25-2 and 32-2

EnerVal type	D	d	H	a	b	c	e	f	g	Tilting dimension
(100)	600	480	910	152	337	567	125	-	230	985
(200)	600	480	1440	152	300	720	-	1140	860	1560
(300)	650	480	1780	152	300	890	-	1479	1285	1895
(500)	750	597	1921	127	220	946	1400	1670	1360	2025

Deviations possible as a result of manufacturing tolerances.
Dimensions ± 10 mm

EnerVal (800-2000)
(Dimensions in mm)



- | | | | |
|-----|------------------------------------------------------------------------------|------------------------------------------|----------------|
| 1 | Heating connection | return discharge (inflow restrictor) | Rp 2" (IT) |
| 2 | Heating connection | flow discharge (single-layer elbow pipe) | Rp 2" (IT) |
| 3 | Heat generator connection | flow top (inflow restrictor) | Rp 2" (IT) |
| 4 | Heat generator connection | return top (inflow restrictor) | Rp 2" (IT) |
| 5 | Heat generator connection | flow bottom (inflow restrictor) | Rp 2" (IT) |
| 6 | Heat generator connection | return bottom (inflow restrictor) | Rp 2" (IT) |
| 7 | Sleeve for immersion sleeve, thermostat or thermometer | | Rp 1/2" (IT) |
| 8 | Sensor terminal strip | | 2 x |
| 9 | Removable cap (100 mm) for positioning the sensor | | |
| 10 | Possible air vent | | Rp 1" (IT) |
| 11 | Separating plate | | |
| 11a | Holes in the separating plate | | 12 x |
| 12 | Connection for electric heating element | | Rp 1 1/2" (IT) |
| 14 | Connection for circulation lance, attention: only for type (800,1000) | | Rp 1" (IT) |

Deviations possible as a result of manufacturing tolerances.
Dimensions ± 10 mm

EnerVal type	D	d	H	a	b	c	e	f	g	i	k	m	n	p	q	r	s	Tilting dimension
(800)	1090	790	1907	183	315	410	496	840	1011	1269	1402	1537	1672	251	800	50	500	1945
(1000)	1090	790	2197	183	369	468	569	970	1171	1472	1596	1759	1942	370	800	100	500	2230
(1500)	1300	1000	2135	220	368	451	549	941	1137	1431	-	1699	1839	339	800	100	500	2179
(2000)	1500	1200	2145	220	382	430	529	928	1127	1425	-	1672	1839	350	800	80	500	2210

Hoval quality.
You can count on us.

Hoval is one of the leading international companies for heating and indoor climate solutions. Drawing on more than 80 years of experience and benefiting from a close-knit team culture, the Hoval Group delivers exciting solutions and develops technically superior products. This leadership role requires a sense of responsibility for energy and the environment, which is expressed in an intelligent combination of different heating technologies and customised indoor climate solutions.

Hoval also provides personal consultations and comprehensive customer service. With around 2500 employees in 15 companies around the world, Hoval sees itself not as a conglomerate, but as a large family that thinks and acts globally.

Hoval heating and indoor climate solutions are currently exported to more than 50 countries.

Responsibility for energy and environment

Your Hoval partner

Liechtenstein

Hoval Aktiengesellschaft
9490 Vaduz
+423 399 24 00
hoval.com

United Kingdom

Hoval Ltd.
Newark Notts. NG 24 1JN
+44 1636 672 711
hoval.co.uk

Hoval EnerVal G

Buffer storage tank
EnerVal G (800-6000)



Table of contents

■ Description	5
■ Part numbers	6
■ Technical data	7
■ Dimensions	9

**Buffer storage tank
EnerVal G (800,1000)**

- Steel buffer storage tank for the hydraulic integration of energy generators
- Thermal insulation made of polyester fibre with foil jacket, colour red (removable)
- 8 connection flanges DN 65 (PN 6)
- 2 connection flanges DN 80 (PN 6)
- 2 flanges outside Ø 180 mm for flange-mounted electric heating element
- 3 sleeves G ½" (IT) for sensor/thermometer
- Terminal strips for contact sensors
- 1 sleeve G 1" (IT) for circulation lance
- 1 sleeve G 1" (IT) for ventilation
- Perforated separating plate in the central area for separation of the temperature zones
- Flow diversions permanently installed
- 12 insulated flange hoods
- 1 insulated cover cap made of EPP hard foam, 2-piece (can be broken out)

Delivery

- Buffer storage tank mounted and packed with thermal insulation (can be removed for installation)
- Insulated flange hoods and cover cap already mounted (removable)



Range

EnerVal G type	Content l	Operating pressure bar
(800)	783	6
(1000)	925	6
(1500)	1395	6
(2500)	2360	6
(4000)	3907	6
(6000)	5815	6

**Buffer storage tank
EnerVal G (1500,2500)**

- Steel buffer storage tank for the hydraulic integration of energy generators
- Thermal insulation made of polyester fibre with foil jacket, colour red (removable)
- 8 connection flanges DN 80 (PN 6)
- 2 connection flanges DN 100 (PN 6)
- 2 flanges outside Ø 257 mm for flange-mounted electric heating element
- 3 sleeves G ½" (IT) for sensor/thermometer
- Terminal strips for contact sensors
- 1 sleeve G 1" (IT) for ventilation
- Perforated separating plate in the central area for separation of the temperature zones
- Flow diversions permanently installed
- 12 insulated flange hoods

Delivery

- Buffer storage tank (1500) mounted and packed with thermal insulation (can be removed for installation)
- Buffer storage tank (2500) separate thermal insulation
- Insulated flange hoods already mounted (removable)

**Buffer storage tank
EnerVal G (4000,6000)**

- Steel buffer storage tank for the hydraulic integration of energy generators
- Without thermal insulation (on-site)
- 8 connection flanges DN 100 (PN 6)
- 2 connection flanges DN 125 (PN 6)
- 2 flanges outside Ø 257 mm for flange-mounted electric heating element
- 3 sleeves G ½" (IT) for sensor/thermometer
- Terminal strips for contact sensors
- 1 sleeve G 1" (IT) for ventilation
- Perforated separating plate in the central area for separation of the temperature zones
- Flow diversions permanently installed

Delivery

- Buffer storage tank raw packed
- Thermal insulation to be provided on site

Buffer storage tank



EnerVal G (800-6000)

Steel tank raw on the inside
 EnerVal G (800-1500) fully insulated;
 EnerVal G (2500), separate thermal insulation;
 EnerVal G (4000,6000) packaged raw,
 thermal insulation to be provided on site

EnerVal G type	Content l
(800)	783
(1000)	925
(1500)	1395
(2500)	2360
(4000)	3907
(6000)	5815

Part No.

7019 133
 7019 134
 7019 135
 7019 136
 6059 869
 6059 870

Electric heating elements
 see chapter "Electric heating elements"

Accessories



Protective tube immersion

sleeve set 200 1/2", 4 x
 For installation of maximum 4 sensors
 Nickel-plated brass
 Installation length = 187 mm
 Outer Ø: 18 mm, inner Ø: 16 mm
 including 3 segment springs 90°,
 1 Omega clamping spring

6061 045



Protective tube immersion sleeve SB280 1/2"

Nickel-plated brass
 Installation length = 280 mm
 Outer Ø: 9 mm, inner Ø: 7 mm

2018 837



Thermometer kit

for EnerVal (800-6000)
 Thermometer 0 ... 120 °C with
 chromium plated edge and Hoval logo
 Stem length: 80 mm, stem Ø: 9 (13) mm,
 External Ø: 80 mm
 incl. immersion sleeve 1/2" nickel-plated
 brass, installation length: 200 mm,
 external Ø: 16 mm, internal Ø: 15 mm
 and clamping spring

6052 107

Services



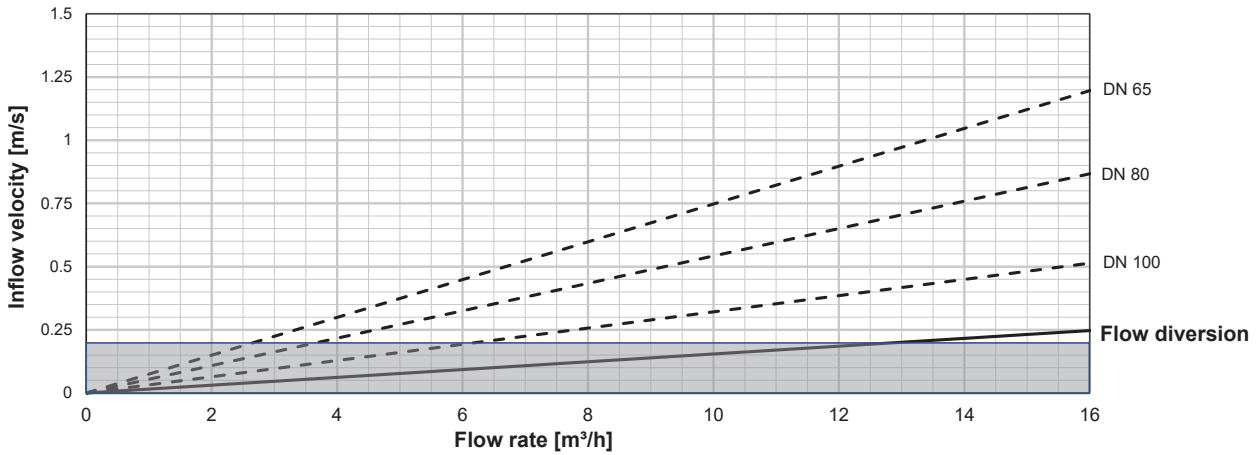
Services and associated scope of services
 see separate catalogue "Hoval Services"

Commissioning by Hoval customer service
 is a prerequisite for warranty/guarantee
 activation.

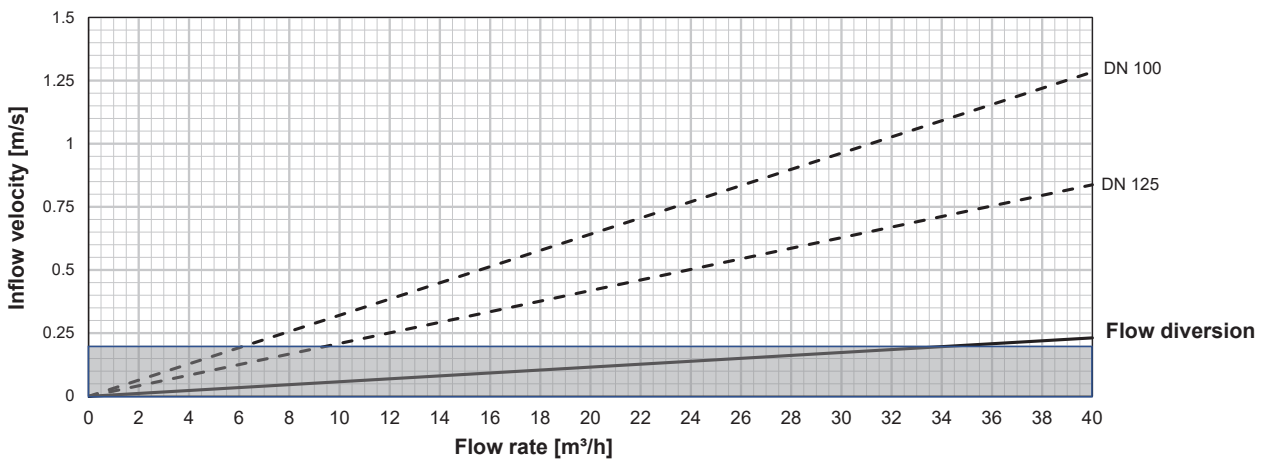
EnerVal G (800-6000)

Type		(800)	(1000)	(1500)	(2500)	(4000)	(6000)
• Volume	l	783	925	1395	2360	3907	5815
• Max. operating/test pressure	bar	6/8	6/8	6/8	6/8	6/8	6/8
• Min. operating temperature	°C	20	20	20	20	20	20
• Max. operating temperature	°C	95	95	95	95	95	95
• Thermal insulation made from polyester fleece	mm	150	150	150	150	-	-
• Thermal insulation λ	W/mK	0.04	0.04	0.04	0.04	-	-
• Fire protection class		B2	B2	B2	B2	-	-
• Heat loss at 65 °C	W	114	129	152	203	-	-
• Transport weight	kg	215	235	345	775	1275	1695
• U value	W/m ² K	0.302	0.305	0.295	0.295	-	-
• Dimensions		see dimensional drawing					

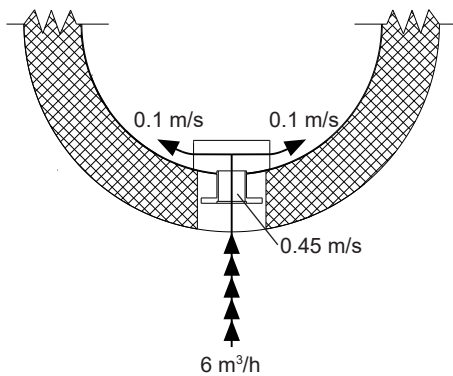
Velocity in the connection nozzles and inflow velocity with flow deflection in the EnerVal G (800-2500)



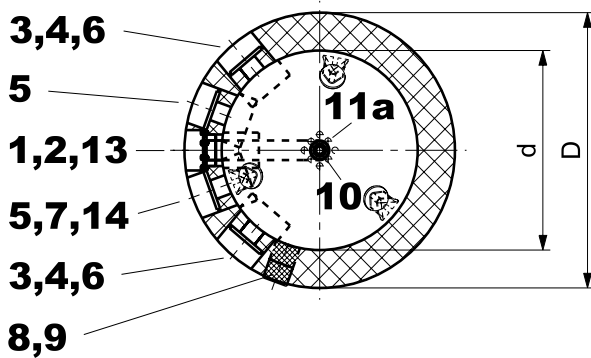
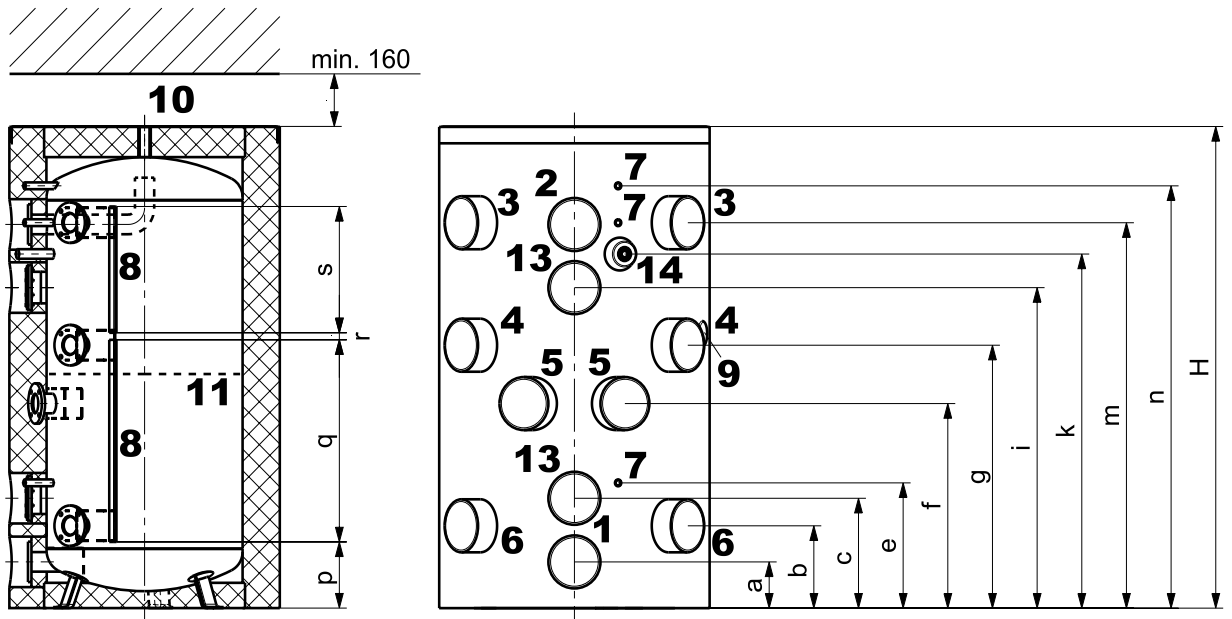
EnerVal G (4000,6000)



Example of inlet velocity distribution by flow diversions EnerVal G (800,1000)



EnerVal G (800-2500)
(Dimensions in mm)



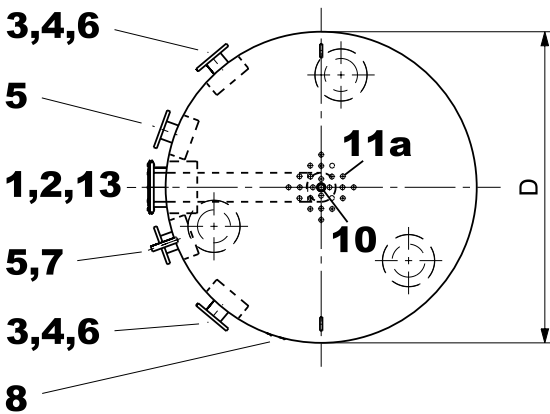
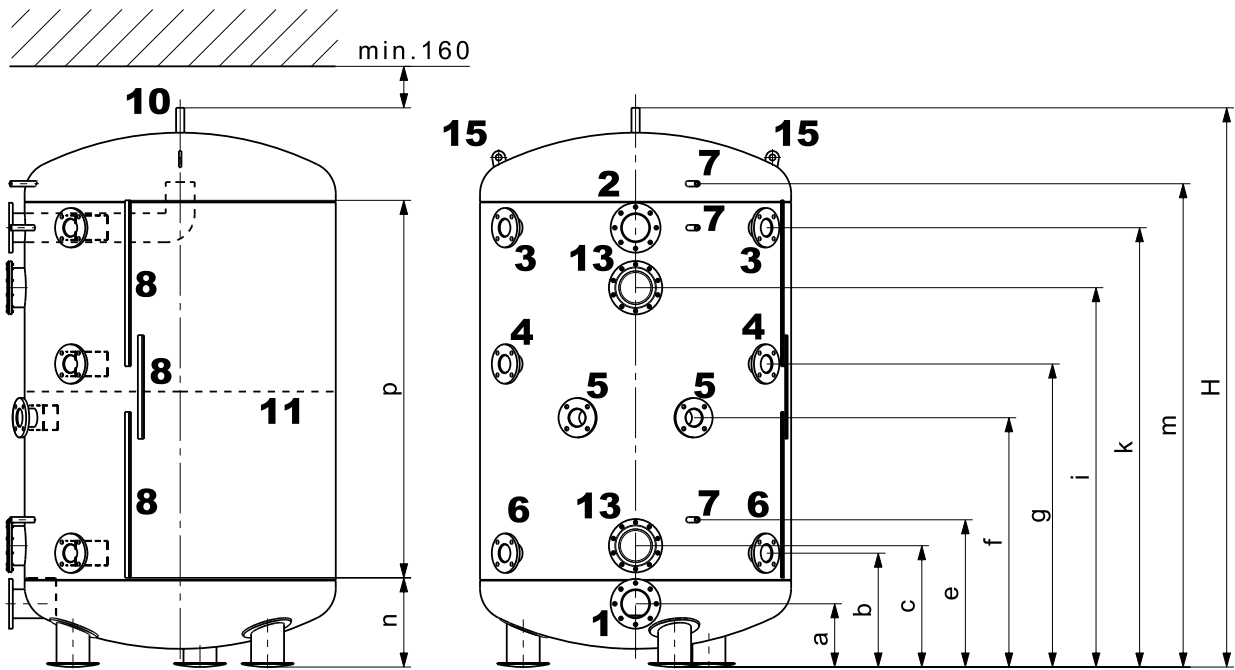
Deviations possible as a result of manufacturing tolerances.
Dimensions ± 10 mm

- 1 Heating connection return discharge (inflow restrictor)
 - 2 Heating connection flow discharge (single-layer elbow pipe)
 - 3 Heat generator connection flow top (inflow restrictor)
 - 4 Heat generator connection return top (inflow restrictor)
 - 5 Heat generator connection flow bottom (inflow restrictor)
 - 6 Heat generator connection return bottom (inflow restrictor)
 - 7 Sleeve for immersion sleeve, thermostat or thermometer
 - 8 2 sensor terminal strips
 - 9 Removable cap (100 mm) for positioning the sensor
 - 10 Possible air vent
 - 11 Separating plate
 - 11a Holes in the separating plate
 - 13 Hand-hole flange (flange-mounted electric heating element)
(800,1000) outside Ø 180 mm, pitch circle Ø 150 mm, 8 x M10
(1500,2500) outside Ø 257 mm, pitch circle Ø 225 mm, 10 x M10
 - 14 Connection for circulation lance, **attention:** only for type (800,1000)
- * The screw holes have threads
** Dimension for transport into building 823 mm (due to flanges position 3,4,6)

Type (800,1000)	pitch circle Ø	Type (1500,2500)	pitch circle Ø
DN 80, 4 x M16*, PN 6,	150 mm	DN 100, 4 x M16*, PN 6,	170 mm
DN 80, 4 x M16*, PN 6,	150 mm	DN 100, 4 x M16*, PN 6,	170 mm
DN 65, 4 x M12*, PN 6,	130 mm	DN 80, 4 x M16*, PN 6,	150 mm
DN 65, 4 x M12*, PN 6,	130 mm	DN 80, 4 x M16*, PN 6,	150 mm
DN 65, 4 x M12*, PN 6,	130 mm	DN 80, 4 x M16*, PN 6,	150 mm
DN 65, 4 x M12*, PN 6,	130 mm	DN 80, 4 x M16*, PN 6,	150 mm
Rp ½" (IT)		Rp ½" (IT)	
Rp 1" (IT)		Rp 1" (IT)	
12 x		12 x	
Rp 1" (IT)		-	

EnerVal G type	D	d	H	a	b	c	e	f	g	i	k	m	n	p	q	r	s	Tilting measure
(800)	1090	790**	1907	183	326	435	496	810	1041	1269	1402	1526	1672	262	800	28	500	1945
(1000)	1090	790**	2197	183	369	468	569	955	1186	1472	1596	1759	1942	370	800	100	500	2230
(1500)	1300	1000	2135	180	358	489	529	894	1144	1360	-	1679	1819	319	800	100	500	2154
(2500)	1500	1200	2500	250	435	560	645	1100	1352	1670	-	2003	2211	400	800	100	800	2567

EnerVal G (4000,6000)
(Dimensions in mm)



Deviations possible as a result of manufacturing tolerances.
Dimensions ± 10 mm

- 1 Heating connection return discharge (inflow restrictor)
- 2 Heating connection flow discharge (single-layer elbow pipe)
- 3 Heat generator connection flow top (inflow restrictor)
- 4 Heat generator connection return top (inflow restrictor)
- 5 Heat generator connection flow bottom (inflow restrictor)
- 6 Heat generator connection return bottom (inflow restrictor)
- 7 Sleeve for immersion sleeve, thermostat or thermometer
- 8 3 sensor terminal strips
- 10 Possible air vent
- 11 Separating plate
- 11a Holes in the separating plate
- 13 Hand-hole flange (flange-mounted electric heating element)
Outside Ø 257 mm, pitch circle Ø 225 mm, 10 x M10
- 15 Transport strap

Type (4000,6000)	pitch circle Ø
DN 125, 8 x M16*, PN 6,	200 mm
DN 125, 8 x M16*, PN 6,	200 mm
DN 100, 4 x M16*, PN 6,	170 mm
DN 100, 4 x M16*, PN 6,	170 mm
DN 100, 4 x M16*, PN 6,	170 mm
DN 100, 4 x M16*, PN 6,	170 mm
Rp 1/2" (IT)	
Rp 1" (IT)	
24 x	

* The screw holes have threads

EnerVal G type	D	H	a	b	c	e	f	g	i	k	m	n	p	Tilting measure
(4000)	1500	2696	305	549	585	710	1202	1461	1829	2118	2330	430	1820	2773
(6000)	1500	3802	302	625	805	985	1704	2064	2603	3142	3442	550	2700	3858

Hoval quality.
You can count on us.

Hoval is one of the leading international companies for heating and indoor climate solutions. Drawing on more than 80 years of experience and benefiting from a close-knit team culture, the Hoval Group delivers exciting solutions and develops technically superior products. This leadership role requires a sense of responsibility for energy and the environment, which is expressed in an intelligent combination of different heating technologies and customised indoor climate solutions.

Hoval also provides personal consultations and comprehensive customer service. With around 2500 employees in 15 companies around the world, Hoval sees itself not as a conglomerate, but as a large family that thinks and acts globally.

Hoval heating and indoor climate solutions are currently exported to more than 50 countries.

Responsibility for energy and environment

Your Hoval partner

Liechtenstein

Hoval Aktiengesellschaft
9490 Vaduz
+423 399 24 00
hoval.com

United Kingdom

Hoval Ltd.
Newark Notts. NG 24 1JN
+44 1636 672 711
hoval.co.uk

Hoval EnerVal G cool

Buffer storage tank – cold storage tank
EnerVal G cool (800-6000)



Table of contents

■ Description	5
■ Part numbers	6
■ Technical data	7
■ Dimensions	9

**Buffer storage tank – cold storage tank
 EnerVal G cool (800,1000)**

- Steel buffer storage tank for the hydraulic integration of energy generators, coating with water-based paint
- Cold insulation made of synthetic rubber (19 mm), glued on diffusion-proof, with outer plastic jacket (red)
- 8 connection flanges DN 65 (PN 6)
- 2 connection flanges DN 80 (PN 6)
- 1 sleeve G 1½" (IT) for electric heating element
- 5 sleeves G ½" (IT) for sensor/thermometer
- 1 sleeve G 1" (IT) for circulation lance
- 1 sleeve G 1" (IT) for ventilation
- Perforated separating plate in the central area for separation of the temperature zones
- Flow diversions permanently installed

Delivery

- Cold storage tank mounted with cold insulation (glued on diffusion-proof)



**Buffer storage tank – cold storage tank
 EnerVal G cool (1500,2500)**

- Steel buffer storage tank for the hydraulic integration of energy generators, coating with water-based paint
- Cold insulation made of synthetic rubber (19 mm), glued on diffusion-proof, with outer plastic jacket (red)
- 8 connection flanges DN 80 (PN 6)
- 2 connection flanges DN 100 (PN 6)
- 1 sleeve G 1½" (IT) for electric heating element
- 5 sleeves G ½" (IT) for sensor/thermometer
- 1 sleeve G 1" (IT) for ventilation
- Perforated separating plate in the central area for separation of the temperature zones
- Flow diversions permanently installed

Delivery

- Cold storage tank mounted with cold insulation (glued on diffusion-proof)

**Buffer storage tank – cold storage tank
 EnerVal G cool (4000,6000)**

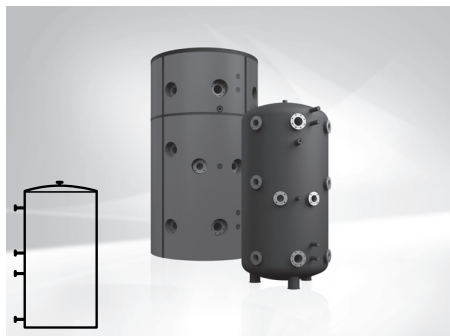
- Steel buffer storage tank for the hydraulic integration of energy generators, coating with water-based paint
- Cold insulation made of synthetic rubber (19 mm), glued on diffusion-proof, with outer plastic jacket (red)
- 8 connection flanges DN 100 (PN 6)
- 2 connection flanges DN 125 (PN 6)
- 1 sleeve G 1½" (IT) for electric heating element
- 5 sleeves G ½" (IT) for sensor/thermometer
- 1 sleeve G 1" (IT) for ventilation
- Perforated separating plate in the central area for separation of the temperature zones
- Flow diversions permanently installed

Delivery

- Cold storage tank mounted with cold insulation (glued on diffusion-proof)

Range		
EnerVal G cool type	Content l	Operating pressure bar
(800)	793	6
(1000)	889	6
(1500)	1440	6
(2500)	2518	6
(4000)	4035	6
(6000)	5849	6

Buffer storage tank – cold storage tank



EnerVal G cool (800-6000)

Steel tank raw on the inside
Cold storage tank mounted with cold insulation

EnerVal G cool type	Content l
(800)	793
(1000)	889
(1500)	1440
(2500)	2518
(4000)	4035
(6000)	5849

Electric heating elements

see chapter "Electric heating elements"

Accessories



Protective tube immersion

sleeve set 200 1/2", 4 x
For installation of maximum 4 sensors
Nickel-plated brass
Installation length = 187 mm
Outer Ø: 18 mm, inner Ø: 16 mm
including 3 segment springs 90°,
1 Omega clamping spring

6061 045

Protective tube immersion sleeve SB280 1/2"

Nickel-plated brass
Installation length = 280 mm
Outer Ø: 9 mm, inner Ø: 7 mm

2018 837

Thermal insulation for EnerVal G cool

made of polyester fibre fleece
Outer plastic jacket colour red with patented
aluminium sealing bracket

Type	Polyester fibre fleece
(800)	120 mm
(1000)	120 mm
(1500)	140 mm
(2500)	140 mm
(4000)	140 mm
(6000)	140 mm

6061 134
6061 135
6061 136
6061 137
6061 138
6061 139

Services



Services and associated scope of services

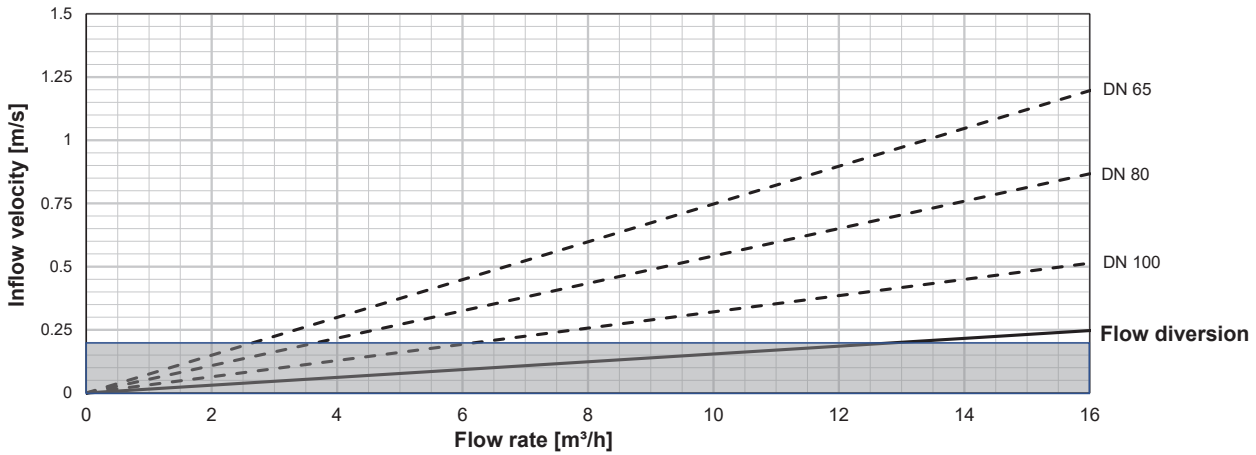
see separate catalogue "HoVal Services"

Commissioning by HoVal customer service is a prerequisite for warranty/guarantee activation.

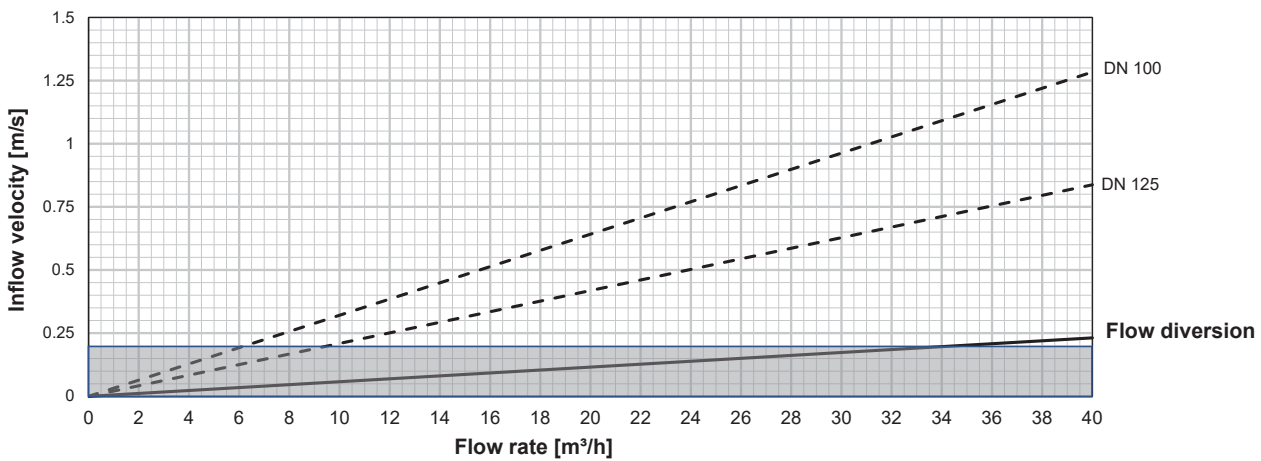
EnerVal G cool (800-6000)

Type		(800)	(1000)	(1500)	(2500)	(4000)	(6000)
• Volume	l	793	889	1440	2518	4035	5849
• Max. operating/test pressure	bar	6/8	6/8	6/8	6/8	6/8	6/8
• Min. operating temperature	°C	5	5	5	5	5	5
• Max. operating temperature	°C	85	85	85	85	85	85
• Cold insulation synthetic rubber	mm	19	19	19	19	19	19
• Cold insulation λ 0 °C	W/mK	0.033	0.033	0.033	0.033	0.033	0.033
• Cold insulation λ 40 °C	W/mK	0.037	0.037	0.037	0.037	0.037	0.037
• Fire protection class		B-s3,d0	B-s3,d0	B-s3,d0	B-s3,d0	B-s3,d0	B-s3,d0
• Transport weight	kg	171	189	306	468	694	902
• Water vapour diffusion resistance μ		≥ 7000	≥ 7000	≥ 7000	≥ 7000	≥ 7000	≥ 7000
• Dimensions		see dimensional drawing					

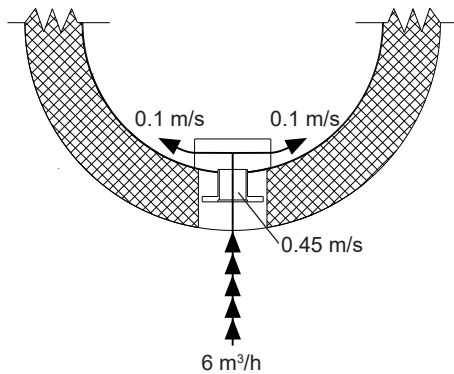
Velocity into the connection nozzle and inflow velocity with flow diversion
EnerVal G cool (800-2500)



EnerVal G cool (4000,6000)



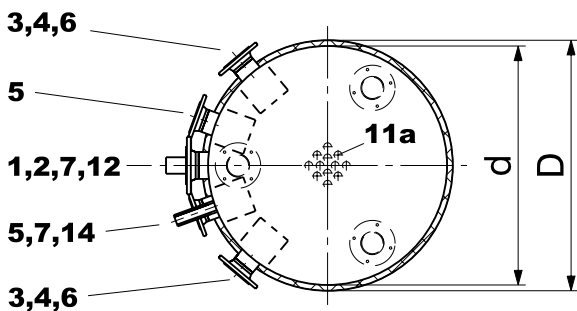
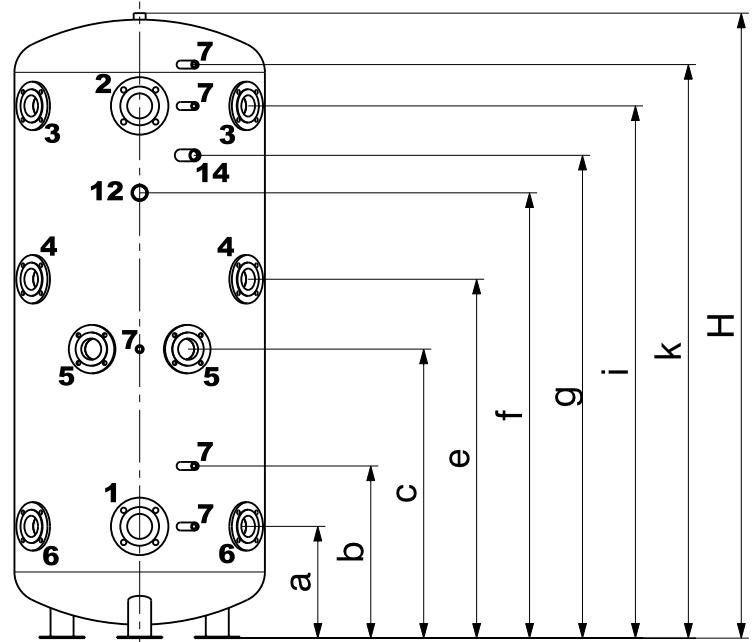
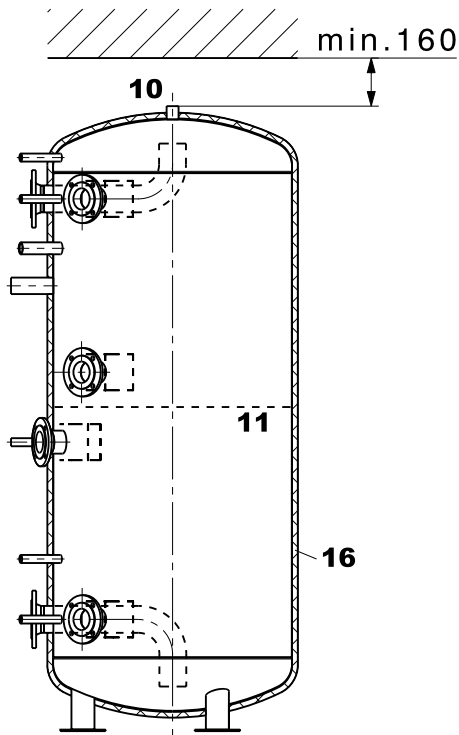
Example of inlet velocity distribution by flow diversions EnerVal G cool (800,1000)



EnerVal G cool (800-6000)

Dimensions incl. cold insulation (series)
(Dimensions in mm)

Deviations possible as a result of manufacturing tolerances.
Dimensions ± 10 mm



Type (800-6000)	pitch circle ∅
DN 65, PN 6	130 mm
DN 80, PN 6	150 mm
DN 100, PN 6	170 mm
DN 125, PN 6	200 mm

Type (800,1000)	Type (1500,2500)	Type (4000,6000)
DN 80, 4 x M16*	DN 100, 4 x M16*	DN 125, 8 x M16*
DN 80, 4 x M16*	DN 100, 4 x M16*	DN 125, 8 x M16*
DN 65, 4 x M12*	DN 80, 4 x M16*	DN 100, 4 x M16*
DN 65, 4 x M12*	DN 80, 4 x M16*	DN 100, 4 x M16*
DN 65, 4 x M12*	DN 80, 4 x M16*	DN 100, 4 x M16*
DN 65, 4 x M12*	DN 80, 4 x M16*	DN 100, 4 x M16*
G 1/2" (IT)	G 1/2" (IG)	G 1/2" (IT)
G 1" (IT)	G 1" (IG)	G 1" (IT)
12 x	12 x	24 x
G 1 1/2" (IT)	G 1 1/2" (IT)	G 1 1/2" (IT)
G 1" (IT)		

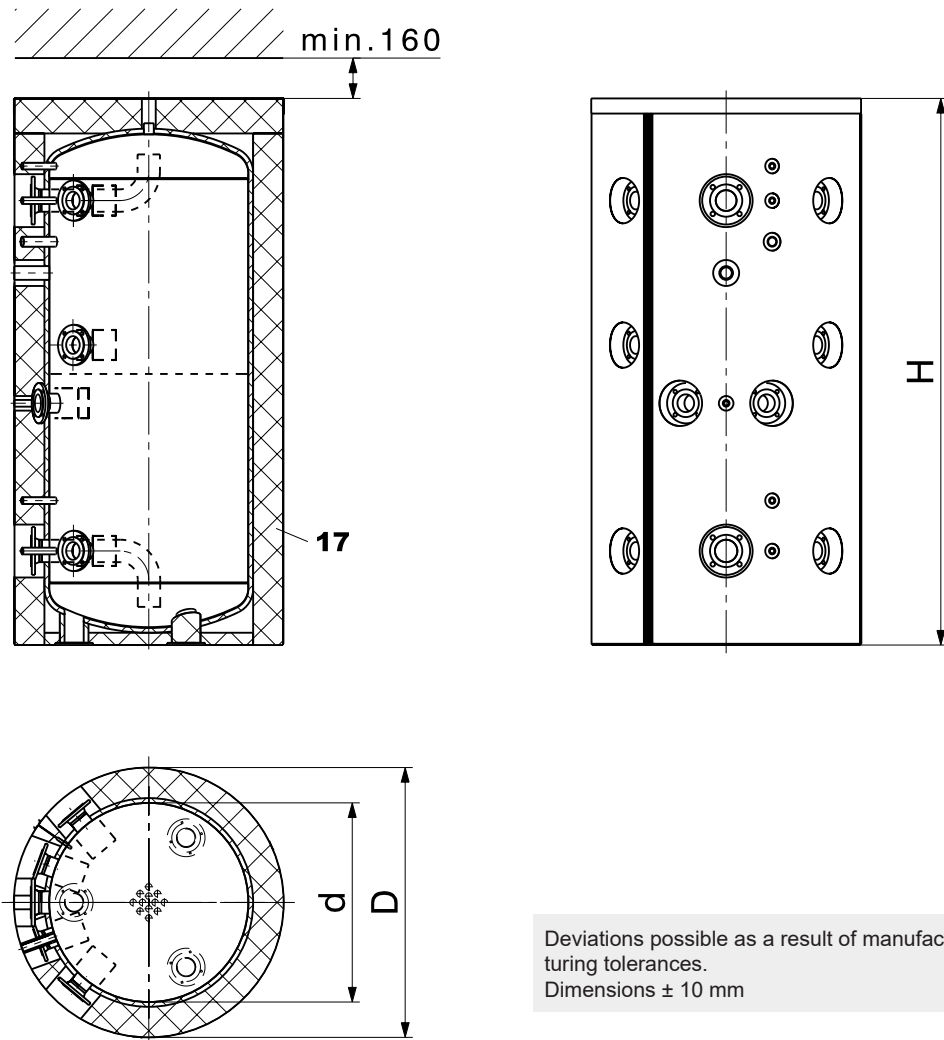
- 1 Cooling connection flow discharge (bend pipe)
- 2 Cooling connection return discharge (bend pipe)
- 3 Cold generator connection return top (inflow restrictor)
- 4 Cold generator connection flow top (inflow restrictor)
- 5 Cold generator connection return bottom (inflow restrictor)
- 6 Cold generator connection flow bottom (inflow restrictor)
- 7 Sleeve for immersion sleeve, thermostat or thermometer
- 10 Possible air vent
- 11 Separating plate
- 11a Holes in the separating plate
- 12 Connection for electric heating element
- 14 Connection for circulation lance, **attention:** only for type (800,1000)
- 16 Cold insulation, thickness 19 mm
- * The screw holes have threads
- ** Dimension for transport into building = D

EnerVal G cool

type	D**	d	H	a	b	c	e	f	g	i	k	Tilting measure
(800)	828	790	1866	327	496	810	1041	1269	1402	1527	1684	1882
(1000)	828	790	2066	369	569	955	1186	1472	1596	1759	1894	2080
(1500)	1028	990	2140	378	549	914	1164	1380	-	1699	1916	2158
(2500)	1288	1250	2448	435	645	1050	1302	1595	-	1903	2211	2475
(4000)	1438	1400	2975	485	780	1386	1638	2227	-	2535	2735	2999
(6000)	1638	1600	3303	523	840	1473	1873	2523	-	2823	3023	3342

EnerVal G cool (800-6000)

Dimensions with thermal insulation (optional)
(Dimensions in mm)



Deviations possible as a result of manufacturing tolerances.
Dimensions ± 10 mm

17 Thermal insulation, thickness
(in addition to the 19 mm cold insulation)

Type (800,1000)	Type (1500,2500)	Type (4000,6000)
120 mm	140 mm	140 mm

EnerVal G cool type	D	d	H
(800)	1068	790	1961
(1000)	1068	790	2161
(1500)	1308	990	2255
(2500)	1568	1250	2563
(4000)	1718	1400	3090
(6000)	1918	1600	3418

Hoval quality.
You can count on us.

Hoval is one of the leading international companies for heating and indoor climate solutions. Drawing on more than 80 years of experience and benefiting from a close-knit team culture, the Hoval Group delivers exciting solutions and develops technically superior products. This leadership role requires a sense of responsibility for energy and the environment, which is expressed in an intelligent combination of different heating technologies and customised indoor climate solutions.

Hoval also provides personal consultations and comprehensive customer service. With around 2500 employees in 15 companies around the world, Hoval sees itself not as a conglomerate, but as a large family that thinks and acts globally.

Hoval heating and indoor climate solutions are currently exported to more than 50 countries.

Responsibility for energy and environment

Your Hoval partner

Liechtenstein

Hoval Aktiengesellschaft
9490 Vaduz
+423 399 24 00
hoval.com

United Kingdom

Hoval Ltd.
Newark Notts. NG 24 1JN
+44 1636 672 711
hoval.co.uk